

CON-Line[®] Tabletholder

Item no.: 2882

Optional accessory for CON-Line media steles

The CON-Line[®] tabletholder is available as an optional accessory and can be combined with all CON-Line[®] and CON-Line[®] Big media columns.

The universal tablet holder is suitable for tablets from at least 9.7" (width: 240 mm) up to a maximum of 12.4" (width: 290 mm). Thanks to the extendable rail, the shelf can be adjusted exactly to the width of the tablet.

If desired, the holder can also be adapted and manufactured to any other model.

A surrounding support edge prevents the tablet from slipping out while it is placed in the holder, but also enables an easy remove, e.g. for usage at a presentation.

The practical shelf is installed on the side, left of the media column.

The tablet holder has an internal USB-A port, which can be used, for example to charge the tablet.

The shelf is made of black plastic.



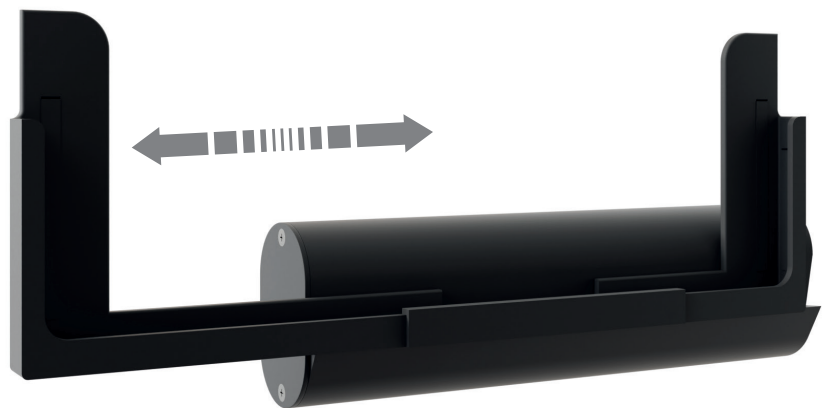
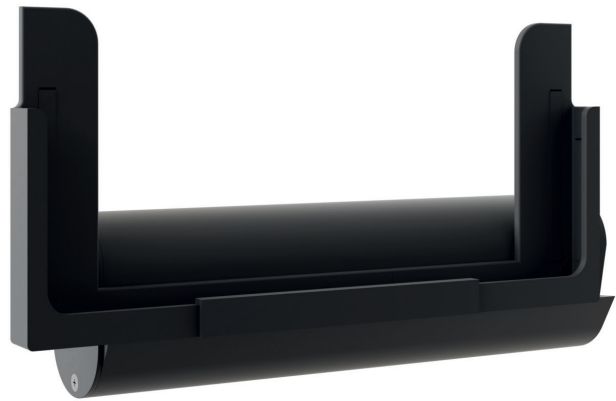
Internal USB 1 port



All-round support edges secure the tablet



Mounted on the side of the media steles



CON-Line[®] Tabletholder

Item no.: 2882

Optional accessory for CON-Line media steles

- Universal tablet holder for tablets from 9.7" - 12.4"
- Suitable for mounting on all CON-Line[®] and CON-Line[®] Big media columns
- Installation takes place on the side, left of the media column
- All-round support edges prevent the tablet from slipping out while it is placed in the holder
- Thanks to the extendable rail, it is possible to adjust the shelf exactly to the width of the tablet
- Gummed on the inside to protect devices edges
- Minimal tablet width = 240 mm (9.7")
Maximum tablet width = 290 mm (12.4")
- USB-A port on the inside available, e.g. to charge
- Material: Plastic
- Colour: black
- If desired, the holder can also be adapted and manufactured to any other model

